

The Just One Challenge

3

Servant-Leaders

4-5

Getting Healthy!

14-15

Great Lakes Christian College

key

Volume 57 No. 2

Spring 2011





“Does God still need us?” Are we still a part of God’s plan to help prepare students to be servant leaders in the church and world?”

Last summer I was asked a good question concerning the future of Bible Colleges. The question was raised because of the apparent financial difficulties these types of schools were having. The question was, “Is there still a market for a college like yours?” I immediately answered, “Yes.” I answered yes because I do believe that there is still a market for a college that cares about a student’s mind, character, and faith. Parents and students recognize the importance of educating the total person if one is to live a full and meaningful life. But there is a bigger and better question to answer, “Does God still need us?” Are we still a part of God’s plan to help prepare students to be servant leaders in the church and world?” Again, I would answer, “Yes.” And I answer that question with confidence. It does seem at times, because of financial stress and economic cycles that a college like ours lives on a small margin. There might be those that think our future is tenuous at best and that we need a new model if we are going to be successful or even relevant. But, I don’t feel that way. We are here because God wants us here. We are a “faith-based” institution that relies on our relationship with our Heavenly Father. Despite appearances we are as strong as God’s purpose. Yes, there are those times when we are concerned about our financial situation, but the bottom line for us isn’t in spread sheets or ratios it’s in our continued desire to be faithful to the plan God has for us. In Acts 13:36 we read, “For when David had served the purpose of God in his

own generation, he fell asleep and was buried with his ancestors.” What was true for David is also true for us. We are here to serve God’s purpose for our own generation. When that purpose has been fulfilled we will cease to exist. In the meantime, our part in all of this is to be faithful servants and stewards of all that God has in mind for us. We’ve been striving to do that for over 60 years. We have sent hundreds of workers out into the harvest field to fulfill the call of God. Last May around 70% of our graduates indicated plans to serve the Lord in full-time ministry. Does God still need us? I am convinced the answer is, “Yes!”

When you partner with us you become involved in something that can change lives for the better - forever. While we are concerned about providing an excellent education and want our graduates to be good citizens able to think through critical issues and make informed decisions, we also see things from a broader perspective. Education can only take you so far. To make an eternal difference you need to add the aspect of faith. This faith has been able to take us from the shores of Rock Lake to the shadow of Michigan’s Capitol. This faith has been able to sustain us in good times and bad. This faith will move us into the future confident in the purpose of God.

Larry Carter
GLCC President

On November 14, 2010 churches all across our country participated in a day of prayer for more workers to enter the harvest field for Christ. Thirty two of our Christian Colleges and Universities joined together in this effort to challenge God's people to pray for just one more worker to respond to the call of God to Kingdom work. Many of our GLCC constituent churches participated and experienced positive results from this challenge.

Great Lakes Christian Colleges wants to keep that challenge alive as it underscores our purpose for existence. Of the 16,000

people groups in the world, 6,600 of them are unreached with the gospel. Every year 3,500 churches close their doors in America (Just One compiled statistics). Do we need more workers taking the gospel to the lost? Do we need leaders for our churches? There will always be the need. We ask that you continue to pray Matthew 9:36 and then look around you and see the potential in the students in your church. Challenge them to be used by God in ministry and to attend GLCC where they will be trained and equipped for harvest work.

"Several weeks prior to the challenge Sunday, Bob Russell was able to 'prime the pump' and raise awareness among our people. Leading up to the day we provided a 'sneak peek' to our Prayer Team and Elders, who immediately became enthusiastic about it. On the Just One Sunday our worship and message was centered on the theme utilizing the resources that were available. At the end of the service, the congregation was led in prayer, focused on Jesus' prayer for more workers. We distributed 300 wristbands and asked the people to wear them to remind them of the need for more laborers. We did not offer an invitation/call to full-time Christian service, however, our congregation currently has more young people enrolled in Christian college than ever before in our history (eight students). This special emphasis gave us the opportunity to highlight the fact that our desire is to be a congregation that is not only praying for workers in the Lord's spiritual harvest field, but also actively sending laborers there."

— Mike Kjergaard, minister,
Cedar Creek Church of Christ, Leo, Indiana

"We participated in The Just One Challenge that Sunday and prayed for more than just one worker. We challenge our youth every year to decide to give their lives to specialized Christian Service. We have six men who are going in the ministry from our past youth groups who are now Juniors or Seniors in college or graduates."

— Ron Klepal, minister,
West Lansing Church of Christ, Lansing, Michigan

"This Just One Sunday was an extension of our Faith Promise Conference, approaching it with the knowledge that the Laborers must be supported and we were able to increase our Faith Promise totals for 2011. It has been the intent of our ministry here to send young people to GLCC for Christian training."

— Dr. Keith Wise, minister,
St. Louis Church of Christ, St. Louis, Michigan

"We begin our prayer list each week with that 'special' prayer request of Jesus."

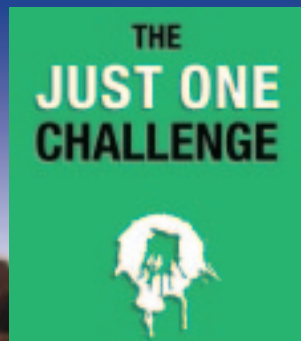
— Dan Johnson, minister,
Kalkaska Church of Christ, Kalkaska, Michigan

"Our congregation was involved in a focused prayer time with a presentation and bulletin insert conducted by our Missions Ministry team. We also have chosen the "Just One" theme for our mission emphasis theme for the year."

— Michael O'Berski, minister,
Oakland Dr. Church of Christ, Portage, Michigan

"Country Christian Church participated in the Just One Challenge and it was a great day with great participation from everyone. Our small group studies discussed the subject during the week. I do believe this is something that every church should address on an annual basis to challenge people for Christian service."

— Roger Keur, minister,
Country Christian Church, North Branch, Michigan



Servant-Leaders *in the Church and World*



COREY BAILEY

Assistant Vice President, Commercial Bank
BRE, Great Lakes Christian College, 1992
BS, Business Administration, Davenport University

I chose to attend Great Lakes for many reasons: I had friends already there, I had an opportunity to play basketball, I could learn more about God's Word along with getting an education in the business field, it was close to home, and it was a small campus with a Christian atmosphere that I felt comfortable with.

I am employed at a small community bank located in Alma, Michigan. I am a lender at the bank and have been there for almost 13 years. God has blessed me with this work not only because it supports my family (wife Eileen (Worth), Nole (14), Dean (12), and Chelsea (10)) but the hours are such (8am to 5pm Monday to Friday) that I get to spend time with them. They are my primary ministry. This job also allows me to be involved in the church. We are members of the St. Louis Church of Christ. Eileen and I are youth staff leaders working with junior and senior high students. I served as a deacon of youth for many years and for the last 4 years

as an Elder of the church. The education I received at Great Lakes along with my spiritual growth while there influenced and prepared me greatly for my life. While I did not enter into a full-time paid ministry, I feel God called me to where I am, being an influential leader in my community and serving in the local church. Not only did the education I received prepare me for where I am now, but the relationships I made were life long. I met my wife at Great Lakes and she is a wonderful wife, wise, godly, and loving mother to our children. I can't imagine what my life may have been like if I had not attended a Christian college. God has certainly used those years to mold me and point me in the direction for His purposes.

I have so many good memories about Great Lakes. I played on the basketball team. The road trips to other colleges in other states were so much fun. Maybe the favorite trip for everyone was the Chicago trip to play Moody as we had the opportunity to walk around the city. The guys I played with (David Kanine, Darin Magley, Darrell Ross, Brian Stehle, David Leazenby, Thad Beard, Fred Lab, Sam Wrisley, David Rawls, Jeff Tank, Russell Brown, Rob Herig, Scotty Johnson and many more) were quality men and we had a lot of fun and grew as brothers. I remember professors like Mr. Fisher, Mr. Brown, Dr. Knowles, Dr. Cameron, Mr. Stehle to name a few that were excellent teachers and even better people. They taught me a lot, but more importantly they cared about me.

If you are a teen looking for God's will for your life after high school there is no better place to go than GLCC. You will study God's word, meet other brothers and sisters that are beginning their life journey, and in the end you will not regret your time and effort spent at Great Lakes Christian College.

"Great Lakes Christian College... seeks to glorify God by preparing students to be servant-leaders in the church and world." We take this mission statement very seriously. Not all of our students choose to work as preachers or teachers in the church as their primary vocation. GLCC students are impacting the world we live in as teachers, librarians, managers, accountants, and health care professionals. Here are just a few of our alumni and their stories about how their time at GLCC has continued to impact the world they live in.



JAMIE WETZEL

Administrative Minister, Meridian Christian Church
BRE, Christian Ministries,
Great Lakes Christian College, 1989
MA, Practical Ministries, Cincinnati Bible Seminary

For the past fifteen years I have served at Meridian Christian Church in Okemos, Michigan. As the Administrative Minister, my role is to oversee the administrative aspects of our church, including finances, facilities, publicity, support for our ministry teams, and some staff oversight.

I had a number of family connections to GLCC but chose instead to go to a state university my freshman year to study computer science. While I enjoyed my time there, I discovered I didn't have much interest in what I was studying. I enrolled at GLCC the next year, intending to stay for just one year before moving on. God had different plans for me, however, and the

exposure to the professors, the Bible classes, and other students caused my life plans to be drastically altered.

GLCC helped prepare me for servant-leadership in ministry by doing two things very well. First, servant-leadership was talked about constantly and repeatedly. It was identified and lifted up as a preferred outcome of our time at GLCC and it was explored and taught in the classroom. Second, servant-leadership was modeled by our professors and area church leaders so that we could see firsthand what it looked like in the church and the world.

As I mentioned, I was planning on staying at GLCC for only one year. Those thoughts began to change while taking two classes taught by Dr. Paul Kissling: Old Testament Survey and Acts. His teaching and guidance helped make the events of the Bible real and relevant, and his passion for God's mission in the world was very inspiring and contagious.

Like many people, I wouldn't be married to the same person I am now if I hadn't attended GLCC. Deeper than that, though, I know if I hadn't attended GLCC I would still be serving God in whatever career path I would have ended up on, but I don't believe I'd have the same Biblical foundation, passion for the local church, and fifteen years of memories from serving in a ministry context.

My favorite memories are the many friends I made while at GLCC, especially hanging out in the dorm with our group of guys known as "The Posse," having great conversation, inventing games, and laughing a lot. Those friendships are still strong today.

For a Christian teen contemplating college and their future career, I would highly recommend considering GLCC as a great start on their journey. The first years of college are such crucial ones for developing and sustaining your Christian faith, and GLCC provides a fantastic environment to strengthen you in whatever direction you go in the future. I would recommend you try it out, even if it's just for a year!



Recent Estate Tax and Gift Tax Revisions

On December 17, 2010, President Barack Obama signed into law a tax bill that temporarily extends the federal estate tax and IRA charitable rollover which could be of great benefit to GLCC. The federal estate tax had been scheduled to return in 2011 on estates above \$1 million, with a top rate of 55%, following a one-year repeal in 2010 where no tax was required of estates. The new law reinstates the estate tax for 2011 and 2012, but limits it to estates over \$5 million with a top tax rate of only 35%. A \$5 million exemption also now applies to federal gift tax and generation-skipping transfer tax and the 35% top rate will apply to both taxes.

What does all this mean? It means that only a few thousand estates per year will be liable for estate taxes now. But everyone should remember that

Estate planning involves much more than estate taxes. All Americans need to plan for a thoughtful distribution of their assets at death, reduction of estate expenses such as probate, state death taxes, and income taxes on retirement accounts—and leaving a legacy to future generations.

estate planning involves much more than estate taxes. All Americans need to plan for a thoughtful distribution of their assets at death, reduction of estate expenses such as probate, state death taxes and income taxes on retirement accounts –and leaving a legacy to future generations. We encourage all of our friends to take this occasion to review their estate planning arrangements. If you want to update your plan or start a plan with a Living Trust we encourage you to contact us. The opportunity is available to have a Living Trust written without any charges and fees because we are a sponsoring partner with Financial Planning Ministry. Contact me for more details.

IRA Charitable Rollover Extended

The new law also permits IRA donors to “double up” in 2011. This law permits persons over age 70 ½ to arrange direct gifts from their IRAs to Great Lakes Christian College, up to a maximum amount of \$100,000, for both 2010 and 2011. (The deadline for making 2010 gifts was January 31, 2011). Only the IRA trustee can transfer gift amounts to avoid income taxes so you are not advised to make withdrawals and then make a donation. No charitable deductions are allowed, but gift amounts will not be included in the donors’ incomes. To make an IRA gift to GLCC, contact the custodian or trustee of your account and ask that they make a transfer gift to us. Contact my office so we may ensure proper transfer and receipting for your

thoughtful contribution.

*This law permits persons over age 70 ½ to arrange direct gifts from their IRAs to Great Lakes Christian College, up to a maximum amount of \$100,000 through 2011 without income tax liability.

Projects That Will Enhance Our Ministry

I want to thank all of you who made donations to the projects that I listed in the last issue. I’ve updated the list below and encourage you to consider gifts above your regular giving to these special projects that have not been included in our budget. Please make the proper designation on your check when giving to these projects.

- \$30,000 to provide a new message sign for our property
- \$5,500 to buy a floor cleaner machine for the Doty Center
- \$5,000 to underwrite a Christian Concert in the community this summer
- \$4,000 to provide four extra portable basketball nets for the Doty Center
- \$3,000 for software to provide an all campus warning system
- \$500 for a bench along our walkways

Phil Beavers
Vice President of
Institutional Advancement

Campus Improvements

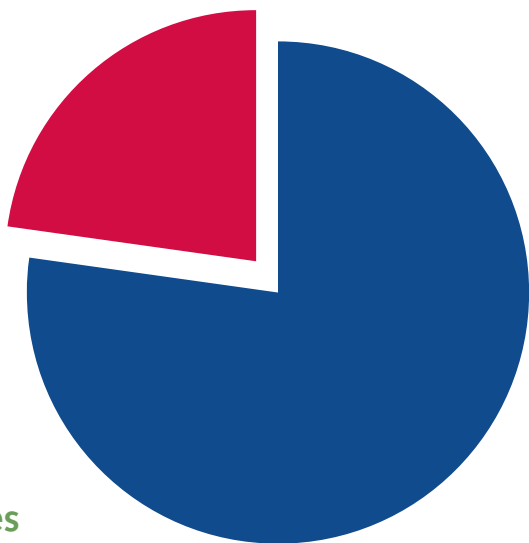
Great Lakes experienced an increase in net assets of \$60,859 in fiscal year 2009 - 2010. Effective spending controls and an improved economy greatly helped the College. While funds remain tight, enhancements were made to the campus to benefit our students.

Major improvements last summer centered around the Women's Residence with remodeling of the bathrooms. A handicapped restroom was also installed. Improvements were made to the Student Mall in the Administration Building, including roof

repairs, a new, permanent wall for the music rehearsal room, and painting. Further work will be done on the Mall this summer, including new carpeting and additional furniture. The College will continue with the installation of security cameras on the campus for the safety of our student body. The Alumni Association has donated funds for outdoor benches and picnic areas for the campus which will be completed this summer.

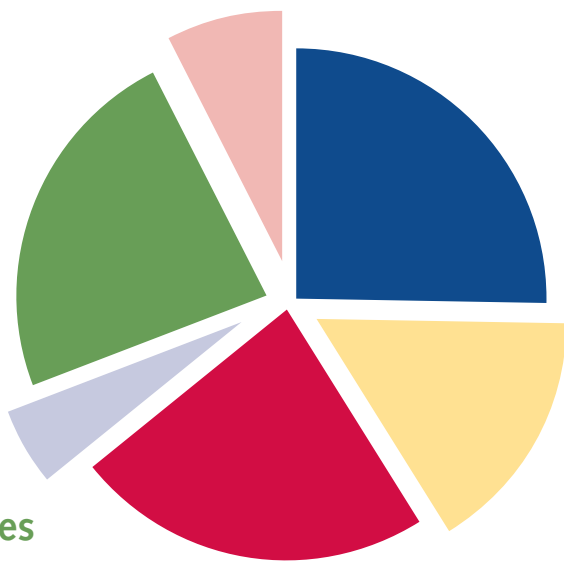
Expenses

- 77.4% Education & General
- 22.6% Auxiliary



Revenues

- 25.5% Net Tuition & Fees
- 15.7% Federal Revenue
- 23.1% Private Gifts
- 5.1% State Revenue
- 23.1% Auxiliary Revenue
- 7.5% Other Revenue



We invite you to participate in our new program, **SAVENDONATE**.

It is a free e-funding application designed to help us raise money, while you shop at over 1,600 online stores. Stores like *staples.com*, *bestbuy.com*, *disneystores.com* and *walgreens.com*.

You shop online and SaveNDonate will donate money to our cause. **It's easy, secure, ...and FREE.**



Projects To Enhance Our Campus

Family Housing Grill and Picnic Area

GLCC thanks the Alumni Association for continuing to make our students and their families a priority. This generous gift of a very practical and much needed addition to our campus will be located between the Men's Dorm and Married Housing. The grill and picnic area will provide students and their families a place to fellowship together and relax while also beautifying and enhancing our campus.

Four New Benches for our Walkways

Benches on a walkway...a simple, yet thoughtful way to communicate to our students and guests that Great Lakes Christian College is a welcoming place to be! Again, the college is grateful to the Alumni Association for their generosity and constant support for our students and their guests.





Regardless of how involved you can be, just know that your involvement on any level [in the GLCC Alumni Association] will have positive results throughout the Kingdom.

Recent Estate Tax and By now you should have received your invitation in the mail to join the Great Lakes Christian College Alumni Association. Let me encourage you to prayerfully consider joining your friends in the Alumni Association. As you noticed in the information provided with the invitation, the benefits offered could more than offset the cost of membership, but I'm sure that you are more concerned with giving to the Kingdom than you are about what you will receive. With that in mind, let me share how membership in the Alumni Association will provide you opportunities to expand your service.

First, you will be a vital part of the College's Ministry. Here are a couple of examples of this fact at work: First,

the Alumni Association is involved in some projects to improve the campus. The first project is the creation of a Family Housing Grill and Picnic area. This will offer students a place to gather and fellowship in a relaxed atmosphere. We anticipate that this area will receive a great deal of use. The second project is the installation of benches and landscaping for the campus walkways. This will create an attractive first impression for visitors as well as a peaceful environment for the use of the faculty, staff, and students of Great Lakes Christian College. Can you see how these improvements will be an asset to the ministry of the College?

The Alumni Association also gives scholarships to help deserving students. As these students leave Great Lakes Christian College they take with them the knowledge and training they have received. I'm certain you have learned how valuable that training has been in your own life. Here is an opportunity to give back to the college and the Kingdom.

In our local churches we know that there are both active and non-active members. Both play an important part in the church and benefit from belonging. We also know that those who are more actively involved in the ministry find that the more actively they serve, the more they are blessed. These same principles can be applied to the Alumni Association. Regardless of how involved you can be, just know that your involvement on any level will have positive results throughout the Kingdom.

*Don Crain
President, Alumni Association*



 A background image of a golf course with a golfer in mid-swing and a golf ball on a tee.

18th Annual
Golf Benefit
Centennial Acres Golf Course

August 13, 2011

www.glcc.edu

ALUMNI NEWS

1950s

John Sears (Professor 1949-1957) passed from this life on November 15, 2010.

Paul Rosebrock (BSL 1955) is retiring from the Woodland Church of Christ in Oxford, Connecticut.

1990s



Corby Blem (BRE 1990) illustrated a book for children, *Once a Ponce a Time*. The bedtime story is written by 4-year-old Alison Vokes (with help from her dad, Joe) and can be ordered online through Halo Publishing. Corby and his wife, Donna, continue

to lead Paint & Draw Workshops and can be seen drawing caricatures at local events around central Michigan. www.corbyblem.com

2000s

Jeri L. Baker (BRE 2003) graduated with a Master of Divinity degree from Western Theological Seminary in Holland, Michigan. Jeri continues to serve as Director of Spiritual Growth at Immanuel Community Reformed Church in Lansing, Michigan.

2010s

Simon Phelps (BS 2010) began as Youth/Worship Minister at Lakewood United Methodist Church in Lake Odessa, Michigan this summer.

Send alumni news to key@glcc.edu

Join us on Facebook! Search for Great Lakes Christian College Alumni.

FUTURE CRUSADERS



Becci (Wheat, 2000-2004) and Travis Fox (BS 2006) welcomed Elliana Kay on December 22 at 2 a.m. She weighed 8 lbs. and was 21 inches long.



Mark (BS 2007) and Deana (Foust, BS 2005) Walter gave birth to Elliana's new best friend, Aliyah Reese Walter the next day, December 23, in the same hospital

with the same doctor. Aliyah was 6 lbs. 10 oz. and 20 inches long.



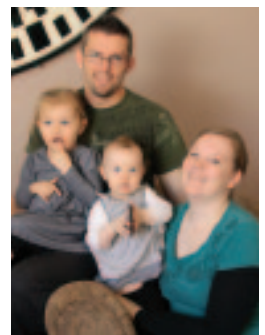
Erin Lookingbill (2001-2003) presents 4-year-old Eva Jade Stout. Erin works at Grand Ledge Baptist Church and runs the Moms and More Child Care Program.



Larry (BS 2010) and Hope (Gruss, BS 2010) Ford announce the birth of Isaac Michael on April 20 "Our little bundle of laughter."

John (1995-1996) and **Rebekah (St. Louis 1997-1998) Gute** announce the birth of Bryce Allen on July 15. He weighed 7 lbs. 3 oz. and was 21 inches long. Bryce joins sister Brenna who is 3 years old. John works with Michigan Christian Campus Ministries and Rebekah teaches First grade in the Owosso School system.

Josh Reed (BRE 2004) and his wife, Bethany, had their second child (Meira Grace Reed) on July 26, 2009. They are members of SIM (Serving in Mission) and will be serving in South Asia to nomadic/orphaned children through Sports Ministry. They will be moving to the field long term sometime in 2012.



Andrew (BRE 2002) and **Rachel** (2001-2004) **Harris** are proud to present Alexander Gabriel Hulk born on February 4 at 9:27 a.m. He weighed 7 lbs. 7 oz. and was 19.5 inches long.



ANNIVERSARIES

The Doty family hosted a celebration for **Ruth Doty's** 90th birthday in November. A special surprise was a collection of gifts in her honor for the Brant Lee Doty Scholarship at GLCC.

East Superior Christian Church in Alma, Michigan celebrated 100 years in February.

April 30, 2011 marks the 80-year anniversary of **Sturgis Church of Christ** in Sturgis, Michigan.

Happy Anniversary to **Westlawn Church of Christ** in Shepherd, Michigan celebrating 150 years on September 18, 2011.

Because of The Cross Concert Choir Tour Spring 2011

MARCH 26, 7:00 P.M.
EAST SUPERIOR CHRISTIAN CHURCH, ALMA, MI

MARCH 27 MORNING SERVICE
MIDLAND CHRISTIAN CHURCH, MIDLAND, MI

MARCH 27, 6:00 P.M.
COUNTRY CHRISTIAN CHURCH, NORTH BRANCH, MI

MARCH 28 AND 29
COUNTRYSIDE CAMP, CAMBRIDGE, ON

MARCH 30, 7:00 P.M.
ANCHOR CHRISTIAN CHURCH, ROCHESTER, NY

MARCH 31, 7:00 P.M.
FIRST CHRISTIAN CHURCH, SANDUSKY, OH

APRIL 1, 7:00 P.M.
FIRST CHURCH OF CHRIST, HICKSVILLE, OH

APRIL 10 6:00 P.M.
HOME CONCERT GLCC, LANSING, MI



And now, Israel, what does the LORD your God ask of you but to fear the LORD your God, to walk in obedience to him, to love him, to serve the LORD your God with all your heart and with all your soul, and to observe the LORD's commands and decrees that I am giving you today for your own good. - Deuteronomy 10:12-13

So, here's a question for you... What do *Fear Factor* and worship have in common? (I can just imagine where your mind's headed, so don't go there, but follow with me.) I have to admit I was never a fan of the reality show, *Fear Factor*. I could barely watch the previews. However there is an interesting concept of fear that can help us understand worship.

But first, here's a little "fear" trivia. Were you aware that there are over 650 phobia names? Here are a few of my favorites—*Arachibutyrophobia*, fear of peanut butter sticking to the roof of your mouth; *Pentheraphobia*, fear of your mother-in-law; *Cacophonophobia*, fear of bad music.

We tend to think of fear as a negative emotion, something bad we need to avoid or overcome. However, there's an interesting idea found in the Old Testament, connected to worshiping God. It is the phrase, "fear the Lord" or "the fear of the Lord." It is found over 120 times in the Old Testament. (It makes for an interesting study, to look up the various passages and see how "fear the Lord" is used.)

What exactly is the "fear of the Lord"? The Hebrew word is *yare*, and has to do with reverent obedience, awe, respect. It doesn't mean to be afraid of God, putting distance from Him as if to hide from Him. It has to do with being awed by His majesty, respecting God for who He is, and

responding with obedience. Deuteronomy 10:12-13 says, "And now, Israel, what does the LORD your God ask of you but to fear the LORD your God, to walk in obedience to him, to love him, to serve the LORD your God with all your heart and with all your soul, and to observe the LORD's commands and decrees that I am giving you today for your own good."

In a web article, Skip Moen says that Deuteronomy 10:12-13 sums up what we need to know about what God wants from us as worshipers—

"Gear up! Prepare! Get going! What does God ask? Fear-Walk-Serve." We respect and honor God, valuing and acting on what He values. We walk, day-to-day, traveling in the direction He calls us. We work and serve, using everyday common tasks as a form of worship to God. "We are tri-athletes, and these three things are needed to finish the race." (skipmoen.com/tag/yare)

So if you've been feeling a little complacent or comfortable in your worship of God, maybe its time to take it up a notch... *Fear Factor: Worship Edition.*

*Dr. Esther Hetrick
Professor of Music*

Beyond the Classroom

Ron Peters (BRE 1999), Associate Professor of New Testament, attended the ETS and SBL national conferences in Atlanta in November.

Dr. John Nugent (BRE 1995), Professor of Old Testament, attended the Ekklesia Project Conference in July, was a guest lecturer at Associated Mennonite Biblical Seminary in November, and published *A Yoderian Rejoinder to Leithart's Defending Constantine*, Englewood Review of Books 3, vol. 46 (Dec 2010).

Dr. Alvin Kuest, Professor of Christian Education, became an elder at West Lansing Church of Christ and helped the Philippine Mission trip raise funds and prepare for travel.

Church Connect

March 26, 9:30 a.m.- 12:30 p.m.

We would like **every supporting church** to send representatives to connect with us and get a first hand update on the ministry of Great Lakes Christian College. We will provide key information that will help mission ministry teams and church leadership teams for 2011.

• **Tours of the campus (8:30 a.m.)**

• **Book giveaways**

RSVP by March 18 by calling Karyn at 517-321-0242, ext. 224, or e-mail kharrison@glcc.edu, or www.glcc.edu in the alert section.

Dean's List Fall 2010

Hannah Allison
Keith Atherton
Benjamin Beck
Ronald Bekkering
Dion Brown
Cashel Coe
Victoria Burr
Sarah Esquivel
Jerod Harris
David Hodgman
Spencer Husch
Joel Ickes
Jennifer Johnson
Kathryn Jones
Antonio Kelley
Nicole Kretzschmer
Tony Lamson
Sarah Lowe
Isaac Magley
Michelle Marsden
Tommy Moehlman
Nathan North

Jessica Novetske
Anna Partridge
Jeremy Paul
Renee Paul
Laura Periso
Amy Robinson
Kayla Ruff
Hannah Sabri
Takawira Sithole
Natasha Smith
Christine Stauffer
Margaryta Teslina
Spencer Thompson
Todd Warthen
Kaela Webb
Aaron Woods
Rebecca Zeedyk

Team Encouragement



Our GLCC men's basketball team, the Crusaders, visited the children's wing at Sparrow hospital in downtown Lansing. Their mission was to bring cheer and hope in the name of Jesus to the young children suffering with various diseases and situations. They gave each child a small basketball and talked about their experience as basketball players. In fact, one child asked, "can you dunk the basketball?" Our players are encouraged to exemplify the Christ-like attitude on and off the court.



GLCC professors promise to be mentors first, instructors second, and researchers third. Our professors invest themselves in the lives of their students.

The Spring Semester is well under way here and our efforts are turning full speed ahead toward Fall 2011! If you are like me, the very mention of the year gives me pause. My how time flies!

While it is still very early in the process, we have reason to be optimistic for our Fall enrollment. Applications are up significantly over last year. Another encouraging factor was the wonderful response we received throughout our fall college fairs. First, the attendances overall were up over last year. And second, we found many students interested in going into ministry – especially missions! This is very encouraging indeed!

The more I am engaged in this business of higher education, the more I am convinced of how different GLCC is from other colleges. Take our teaching faculty for example: Our professors have adopted a “Philosophy for Teaching Faculty”

(written in our catalog) that is “upside down” from other institutions. GLCC professors promise to be mentors first, instructors second, and researchers third. In most institutions of higher education, the professors are “scholars” and “researchers” first and foremost. Often leaving Teacher Assistants (TAs) to teach the courses. Not at GLCC! Our professors invest themselves in the lives of their students. They value every minute of instruction time. And, they keep up with what is going on in their field. I can’t think of a better reason to come to Great Lakes Christian College than our professors!

As always, let us know if you know someone we should be talking to about a getting a truly great education!

Lloyd Scharer
Vice President of Enrollment Management

Women's Spring Celebration

God's Photo Album

Friday, April 29, 2011

6:30 p.m. Food and Fellowship

8:00 p.m. Program

Tickets: \$ 12.00 before April 15

\$ 20.00 after April 15

Call (517) 321-0242 x214

with Guest Speaker
Linda Norville



Living Memorials

Donations listed are from January 1, 2010-December 31, 2010

IN MEMORY OF:

Thelma Ammerman – by Dr. Calvin P. Ammerman, Rosalyn Arnold, Lucile Snyder

Jeanne K. Brown – by Ruth Doty, Naomi Brown, Sally Garman, Mr. and Mrs. Doug Clark, Yvonne Senko, Collin Brown, Joan Lotridge, Mr. and Mrs. Donald J. Weinman, Ed Norton, Betty Martineau, Mr. and Mrs. Jeff Martineau, Jackie Castleberry, Mr. and Mrs. Scott Martineau, Mr. and Mrs. Erik Parka, Mr. and Mrs. Chris Sloan, Mr. and Mrs. Basil E. Keefer, Mr. and Mrs. Marion Ellis, Mr. and Mrs. Patrick D. Rivest, Ronald Shuster, Beverly J. Williams, Robert W. Baur, Robert L. Wilson, Mr. and Mrs. Joe Call, Jane Thid, Paula Ellis, Joyce A Lotridge, Jan M. Graves, Mr. and Mrs. Jack Speckmann, Gay Lynne Liebertz

Glenn H. Campbell – by Pricilla M. Campbell

Elton and Edna Carlson – by Mr. and Mrs. Dewey Nash

Fred and Prudence Chase – by Elnora J. Crockett, Mr. and Mrs. Robert D. Warren

Robert W. Cline – by Mr. and Mrs. Ronald W. Fisher

Louie Colbry – by Richard Colbry

Judy Coolman – by Mr. and Mrs. Paul A. Perry

Arthur Cross – by Shirley L. Miles, Grand Rapids Christian Church

Fern Cross – by Shirley L. Miles, Grand Rapids Christian Church

Louis Detro – by Mr. and Mrs. Fred Garvin, Mr. and Mrs. John D. Green

Joan V. Dickinson – by Gay Lynne Liebertz

Brant Lee Doty – by Mr. and Mrs. Brant Doty, Mr. and Mrs. Justin K. Rowe, Mr. and Mrs. Bruce N. Kenney, Mr. and Mrs. Thomas J. Franklin, Mr. and Mrs. David N. Apple

Fred Ellis – by Owosso Church of Christ

William G. Ellis – by Mr. and Mrs. Robert Palmer

James Fleischman – by Mr. and Mrs. Don Fleischman

John Forsythe – by Phyllis Forsythe

Florence Franklin – by Clara S. Murphy

Della Mae Frazier – by Willard Frazier

Jeff Gerwig – by Mr. and Mrs. William Wakefield

Evaline Gilpin – by Mr. and Mrs. Michael J. Riness

Richard W. Gilpin – by Mr. and Mrs. Michael J. Riness

Susan Gilpin – by Mr. and Mrs. Noel E. Beavers

Dr. and Mrs. Lawrence Ginther – by Nancy Ginther

James Hall – by Barbara Leonard

Rose Heinrich – by Ms. Kay E. Peasley

Myrtle E. Huffine – by Alfred J. Huffine

Veda Hunt – by Carol A Darling

Jeremy Johnson – by Larry H. Johnson

Lorry Knowles – by D. Schainie

Wanetta Little – by William J. Claerhout

Christina Lower – by Mr. and Mrs. William Lower

Charles A. Matthews – Liberty Christian Church, Ruth Doty

Velda G. Matthews – by Ruth Doty

Henry and Imogene McAdams – by Mr. and Mrs. Elton Moyes, Mr. and Mrs. Maurice L. Dawson

James L. McNeill – by Carol A. Darling

Elwyn Miller – by Mildred Miller

George Moon – by Mr. and Mrs. Elton Moyes

Gwen Moyes – by Mr. and Mrs. Elton Moyes

Donald J. Narragon – by Ruth Kegerreis, Norma Narragon

Robert L. Nelson – by Mr. and Mrs. David Atchley

Ivan C. Odor – by Mr. and Mrs. Elton Moyes, Doris E. Odor

Margaret Odor – by Mr. and Mrs. Elton Moyes

Robert P. Olson – by Marcia Archambault

Sam Platner – by Thelma Platner

John A. Sears – by Mr. and Mrs. Charles E. Fox

LeRoy Simpson – by Mr. and Mrs. Charles M. Emmert

F. Noreen Smith – Mr. and Mrs. Elton Moyes

Robert Sprinkle – by First Church of Christ

Deryll Sprunger – by Mr. and Mrs. Philip L. Rosenik

Keith A. Stauffer – by Mr. and Mrs. Robert Palmer

Tim Stewart – by Mr. and Mrs. George L. Merrill

Brandon L. Stout – by Mr. and Mrs. Eric Rollston

Belle Wilcox – by Mr. and Mrs. Robert C. Mallett

Earl Wilcox – by Mr. and Mrs. Robert C. Mallett

IN HONOR OF:

Lawrence L. Carter – by Steve Idle

Ruth Doty – by Sally J. Garmin, Mr. and Mrs. David N. Apple

Paula J. Ellis – by Cynthia Braman

Fred Garvin – by Mr. and Mrs. John D. Green

Norma Garvin – by Mr. and Mrs. John D. Green

Bernard and Clorinda Green – by Mr. and Mrs. John D. Green

Hiram and Shelley Gates' Children – by Wayne Skiver

Ronald S. Klepal – by Mr. and Mrs. Rodney Gill

Fran Lawson – by Cynthia Braman

Marion McCormick – by Win McCormick

Harry A. Richards – by Mr. and Mrs. Elton Moyes

Don A. Stowell – by Lloyd Linder

Keith J. Wise – by Mr. and Mrs. Elton Moyes

Sharon Wise – by Mr. and Mrs. Elton Moyes

Matching Gifts

Donations listed are from January 1, 2010-December 31, 2010

Auto-Owners Insurance Co.	2250
Coca-Cola Company	1000
Consumers Energy	1000
Merrill Lynch	1150
Nationwide Foundation	100
Pfizer Inc.	300
Scripps Howard Foundation	150

Total \$5950



Great Lakes Christian College

Open House

April 12, 2011

6:00-8:00 p.m.

6211 W. Willow Hwy.

Lansing, MI 48917

Doty Center

Come visit our campus, speak with professors, meet with financial aid officers and learn more about the degrees offered at GLCC. Campus life, sports and outreach representatives will also be available.

Intellectual, Spiritual & Personal Growth



GLCC Students have

teamed
up to
**Get
Healthy!**

Drinking water,
working out, getting
more sleep, eating
better...and getting
healthy! Our students
have teamed up to
take off the weight
and become fit
and trim.



On January 14 two teams of students began their quest for health by deciding to participate in a contest to lose weight and improve their health habits. Under the leadership of Kendi Howells-Douglas, Weight Watchers expert, and Karyn Harrison, personal health coach with Take Shape for Life, the two teams of students will learn basic habits of health that will allow them not only to BECOME fit and healthy...but to REMAIN healthy for life!

The students will have several opportunities throughout the 12-week contest to work out and get in shape. Students will be able to attend cardiovascular and resistance training sessions. Professional fitness trainer Jon Greene, from the Downtown Lansing YMCA, will present a free resistance and weight lifting training for all participants of the contest and each contestant will receive free YMCA passes for the duration of the competition.

"I'm doing this because we are to be good stewards of everything God has given us...and that includes our bodies."

R.V. contest participant

The competition includes a regularly scheduled, one-on-one weekly weigh in with their team's coach. Participants will also attend a weekly group coaching session with each coach to help them break unhealthy habits and create new habits that will move them toward living healthy lives. The students are also keeping food journals to track their daily eating habits, water intake and sleep.

"As a team coach and as a mom of one of the students participating, I'm excited to see these young adults taking their health into their own hands and becoming responsible for themselves in this area. It's such a thrill to be able to encourage and support them."

Karyn Harrison

"I joined the competition because I know that if I'm going to be a healthy person, I need to be very intentional about it. It's not just going to happen."

E.H. contestant participant

The new buzz around campus is HEALTH! We are excited to watch our student body SHRINK as they shed unwanted pounds and take responsibility for their own health. We are certain this is just the beginning and that our students will continue to take up the challenge to become physically fit.

Great Lakes Christian College, an institution of higher education affiliated with Christian Churches/Churches of Christ, seeks to glorify God by preparing students to be servant-leaders in the church and world.

The KEY is published by Great Lakes Christian College, located at the corner of N. Creyts Road and Willow Highway. Our Mailing address is Great Lakes Bible College AKA Great Lakes Christian College 6211 West Willow Highway Lansing, MI 48917 Phone 517.321.0242 Fax 517.321.5902 e-mail key@glcc.edu www.glcc.edu

Administration:

Larry Carter, President
Phil Beavers, Vice President
of Institutional Advancement
Bill Brossman, Vice President of Finance
Lloyd Scharer, Vice President
of Enrollment Management
David Richards, Vice President
of Academic Affairs

KEY Staff:

Robyn Orme, Editor

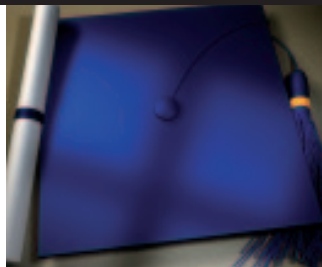
Great Lakes Christian College is accredited by:

The Higher Learning Commission and a member of the North Central Association
www.ncahigherlearningcommission.org

and the

The Association for Biblical Higher Education
(formerly the Accrediting Association of Bible Colleges)
5850 T.G. Lee Blvd, Suite 130
Orlando, FL 32822
407.207.0808, www.abhe.org

Upcoming Events



MARCH

- 26 Church Connect
- 28–April 1 Choir Tour
- 28–April 1 Week of Outreach 2

APRIL

- 8–9 Michigan Christian Convention
- 12 Admissions Open House
- 29 Board of Trustees Meeting
- 29 Senior Showcase
- 29 Women's Spring Celebration

MAY

- 3 Honors Chapel
- 9–11 Final Exams
- 13 Senior Banquet
- 14 Commencement

JUNE

- 19–July 1 Promise Music Camp

AUGUST

- 13 Golf Benefit
- 15 New Student Registration
- 16–20 Orientation
- 22 Classes begin
- 23 Convocation

OCTOBER

- 3 Madrigal tickets on sale
- TBD Brandon Heath Concert (Date TBD)

NOVEMBER

- 4–5 Ministry Wives' Retreat
- 11–13 Fusion
- 21–25 Thanksgiving Break –
No Classes

DECEMBER

- 2–3 Madrigals
- 9–10 Madrigals
- 13–16 Final Exams
- 19–Jan 6 Semester Break

FOR INFORMATION ON CURRENT GLCC EVENTS AND ANNOUNCEMENTS,
BE SURE TO VISIT, WWW.GLCC.EDU, LIKE US ON FACEBOOK,
OR FOLLOW US ON TWITTER @GLCCCRUSADERS.