

Expanding the Capacity for Learning

3-5

New Academic Programs

7

Joking with the Jester

8

Sports News

15

Great Lakes

Christian College

1key

Volume 58 No. 2

Spring 2012



In the last ten years we have... moved forward in becoming an institution of excellence.



In the mid 1990s Great Lakes Christian College was at a crossroad. One road led to a continued struggle to survive. The previous years had been marked by financial difficulties and an erosion of confidence in the College's ability to be an effective institution of higher learning. Despite the efforts of those who cared deeply about the future of GLCC, something had to be done to change direction. We needed to take a different approach. We needed to take another road.

The other road began with the hiring of Jerry Paul as our President. He brought stability and a restored level of confidence within our constituency. The era of living in survival mode was over. While there were still challenges to meet, the focus was not so much on the difficulties of the past but on a future of hope. The road we were on

looked bright and promising. We are still on that road. God has blessed.

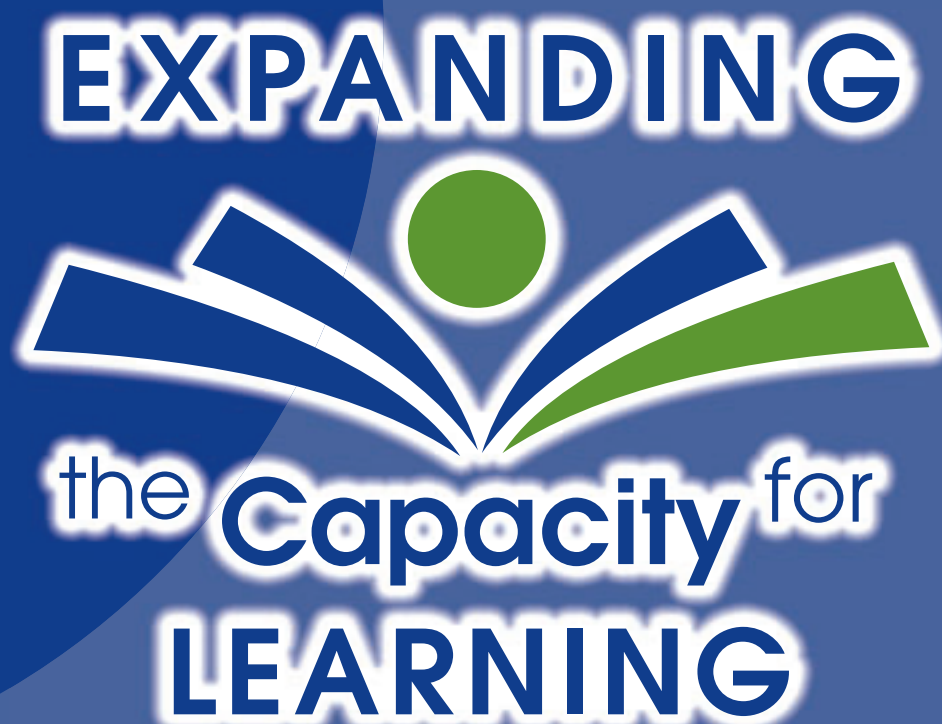
In the last ten years we have become accredited with the Higher Learning Commission, built the Doty Center, and have moved forward in becoming an institution of excellence. Financially, we have finished in the black every year since 1996 except for one year, 2009, when the stock market collapsed. Educationally, we have been blessed to have a great faculty that is increasingly becoming known and appreciated by the wider academic community. We have established an extension site in Detroit in partnership with the Institute for Black Family Development. We have seen our desire to be a more diverse campus become a reality in that we are now around 20% people of color. Programmatically, we have seen an increase in majors as we strive to fulfill our mission to prepare students to be servant-leaders in the church and world. We developed a Family Life Education major and have expanded our Cross-Cultural program to include a focus on urban issues. We have begun a program that will allow distance learners to earn a Christian Ministries major on-line. We are moving forward with a new Business Management - Nonprofit major. These and other planned curricular changes have helped us to increase the potential for our students to impact our world. In athletics we have hired our first full-time Athletic Director, John Piercefield, and we are seeing the results of a program that is committed, first of all, to competing in Christ-honoring ways. He is helping to instill values and principles in our student-athletes that will last much longer than their years of competition. Technologically, we have become a wireless campus and have improved our capacity for learning by having access to over 30,000 ebooks and thousands of on-line magazines and periodicals. We have installed new computers

in our library, tech center, and student mall. Our professors all have the latest technology and with large screen TVs in the classrooms and wireless internet availability for their presentations. We have seen advances in campus security by placing cameras in the administration building and the dorms. And we have secured both the Women's Dorm and the Doty Center by installing automatic key fob entry. These are just some of the things that have helped us become a college that is continuing to move toward excellence.

Our latest area of development is our campaign to build the Knowles Learning Center. This addition will provide new offices for our faculty, expand our cafeteria, and include a new library and classrooms. Most importantly, it will allow us the space to grow and to be in a better position to share with and mentor our students. It will be one more milestone on a road where we have felt God's leading and have experienced His blessing.

As I look back on my time here as President I am especially appreciative of those individuals who have consistently had our college in their prayers. Through the good times and bad they have been the power behind our ministry. I am also grateful for those who have been our partners through their gifts of generosity. All those who have been changed and trained by GLCC owe a debt of gratitude to these wonderful people whose kingdom vision has made an eternal difference. As I look forward I see a road of optimism and hope as we continue to do the things that will make God proud. I am sure there will be some twist and turns ahead. There will be some hills and valleys. But I am confident that the road we are on will lead us to a place of excellence as we make a difference — one life at a time.

Larry Carter
GLCC President



The Expanding the Capacity for Learning campaign focuses on three aspects of Christian higher education: teaching, mentoring, and the tools necessary to facilitate learning. At Great Lakes Christian College we find all three to be important to the training of workers for ministry.

Our programs are well designed and meet the educational goals of those going into full-time Christian ministry. With the Bible as our core curriculum, we create an atmosphere in the classroom that nurtures critical thinking and the ability to integrate faith into everyday life.

Our professors provide quality teaching in and out of the classroom. Their goal is to expand the knowledge of our students as well as assist in the formation of Christian character and personal devotion to Christ. You will find at GLCC a corp of

professors who see the value of mentoring every person in their spiritual journey.

We have taken a step of faith to expand our facilities in order to provide the tools necessary to encourage the best learning atmosphere possible. The Knowles Learning Center will position us for growth in the coming decade. It will provide adequate space for the teaching and research of God's Word through more classrooms and library, and the new office suite will open up greater opportunity for our professors to connect with students as we meet their intellectual, spiritual and personal needs.

The Expanding the Capacity for Learning campaign will enhance the ability of our professors to instruct your students and raise up Godly men and women prepared for a life of Christian service.

Expanding the Capacity for

Why is Great Lakes Christian College conducting a Campaign?

The campaign will enhance the ability of faculty, students, and staff to do their best work for the Kingdom of God. It will also add to the positive impact the College has locally, nationally and globally. Preparing men and women for leadership and service in the name of Christ has always been and always will be the highest of our educational goals.

What project is being funded?

This campaign will fund the building of the Knowles Learning Center which will house the Louis M. Detro Memorial Library and much needed office space for the faculty. It is an addition to the present Woodard Administration Building. Relocating the Louis M. Detro Memorial Library will allow us to repurpose the current library area and office wing into classrooms and additional cafeteria space which will make it possible to accommodate the anticipated growth of our student body.

Why is it named the Knowles Learning Center?

All of our previously named buildings are in honor of those who have served our college in a remarkable way—the Woodard Administration Building, the Louis M. Detro Library and the Doty Center. It follows naturally to have the next building be named in honor of another true servant who has played an integral part in our college's history and growth- Dr. Lloyd Knowles. He has faithfully and humbly served the College since 1970. His commitment to higher Christian education, and his willingness to serve the College in so many ways made Dr. Knowles an obvious choice worthy of this distinct honor. He humbly accepted the honor and only did so because of his desire to be helpful in furthering the ministry of Great Lakes Christian College.

When did the Campaign start and when is it projected to end?

The Campaign was initiated in May of 2011 by the Board of Trustees, based on the information gathered during the feasibility study we conducted. Pledges to the campaign will be given over a three year period and we project the campaign to be completed by the fall of 2014.

\$1,500,000 Million (as of 2-10-12)

\$940,000 Total 3-year commitments

\$672,000 Cash on Hand

\$600,000 Phase One Goal



Learning

"The Knowles Learning Center means looking forward to the future! Developing and expanding our facilities not only beautifies our campus-it symbolizes the dedication of GLCC to providing great opportunities for academic, social and spiritual growth. Seeing the Knowles Learning Center reminds me that GLCC cares about every student-even those who have yet to join our community."

— *Adrienne Stratton*
GLCC Student

"To me, the Knowles Learning Center means better facilities and a better environment to learn and grow. It will impact my education by providing a more comfortable and welcoming area to discover and work hard on my studies."

— *Kaela Webb*
GLCC Student

"The Knowles learning Center is going to be a beautiful building in honor of a dedicated man. I'm sure it will serve the students well!" — *Spencer Husch*
GLCC Student

"The Knowles Learning Center means expansion, growth and forward thinking. It also means new learning opportunities and new potential for educational experiences. I'm excited about the future of Great Lakes Christian College!"

— *Brittany Penwell*
GLCC Student



December 13, 2011



January 11, 2012



January 20, 2012



The momentum continues to build as we anticipate the completion of phase one of the Knowles Learning Center. Our current commitments over three years are approaching \$1 million! The greater news is that we have all the money needed to build phase one. God's people have been generous! Our lead donor for the campaign was in a position to give their entire commitment of \$600,000 up front which moved up the completion date of phase one to May 2012.

Also part of phase one is the remodeling of the cafeteria. Through Joking with the Jester (a Roast of Dr. Lloyd Knowles), auctions, and class challenges, the alumni are taking on the funding for the remodeling and naming of the cafeteria with a \$200,000 goal over three years. Alumni are encouraged to give their gifts to the campaign in honor of any of the GLCC professors. These tributes will be on display in the faculty office suite.

We have every reason to believe that just as God has already generously provided enough funds to build phase one...He will continue to use His people to raise the rest of the funds necessary to build phase two. It is our intention to pay for the entire project without borrowing any money.

Our next financial goal is to secure \$900,000 to build phase two. This phase will house the Louis M. Detro Memorial Library and allow us to remodel the old library space into much needed classrooms. This phase is scheduled to be completed by the end of 2014.

The gifts needed for the full \$1.5 are listed in the chart below. I encourage all friends of GLCC to consider a priority gift, above what they are currently giving to the general fund, to help us reach our financial goals for this two-phase project. We have provided a pledge form in this publication.

We have every reason to believe that just as God has already generously provided enough funds to build phase one...He will continue to use His people to raise the rest of the funds necessary to build phase two. It is our intention to pay for the entire project without borrowing any money. The next three years will be critical years as we partner with supporters of the College to work together in furthering the Kingdom by completing this project.

The Expanding the Capacity for Learning Campaign is being conducted as a CAPITAL campaign meaning that the commitments and gifts made to this campaign will be designated specifically to the building of this project. It is extremely important to point out that funds given to this campaign should be NEW funds, above and beyond your current giving to the general fund. It is critical that current donors continue their regular giving that underwrites our mission. The funding of our mission is vital if we are to experience the full capacity of any building project.

Be sure to look at some of the other details of the campaign on pages 3-5. I know you will be pleased with the direction of Great Lakes and the benefit that this campaign will have on the future students we send out into God's harvest field.

Phil Beavers
Vice President of
Institutional Advancement

CAMPAIGN SCALE of GIFTS

Three-year commitments to the building fund.

LEADERSHIP GIFTS

One gift of	\$ 600,000	(\$ 200,000 / year) equals	\$ 600,000
One gift of	\$ 100,000	(\$ 33,400 / year) equals	\$ 100,000
Two gifts of	\$ 50,000	(\$ 16,700 / year) equals	\$ 100,000
Five gifts of	\$ 30,000	(\$ 10,000 / year) equals	\$ 150,000

PACESETTER GIFTS

Four gifts of	\$ 25,000	(\$ 8,400 / year) equals	\$ 100,000
Ten gifts of	\$ 15,000	(\$ 5,000 / year) equals	\$ 150,000
Twenty gifts of	\$ 7,500	(\$ 2,500 / year) equals	\$ 150,000

INVESTOR GIFTS

Twenty five gifts of	\$ 3,600	(\$ 1,200 / year) equals	\$ 90,000
Twenty gifts of	\$ 1,500	(\$ 500 / year) equals	\$ 30,000
One hundred gifts of	\$ 300	(\$ 100 / year) equals	\$ 30,000

TOTAL

\$ 1,500,000

New Academic Programs

Business Management — Nonprofit Major

Great Lakes Christian College is excited to announce the addition of a new major: *Business Management — Nonprofit*. This major fits the mission of GLCC by providing a significant opportunity to advance our influence in the church and world by training servant-leaders to serve in the nonprofit sector.

Our nonprofit management degree prepares a graduate for entry-level management positions in large nonprofit organizations or leadership positions in smaller organizations. The degree will also prepare the graduate to envision, start up, and manage a nonprofit entity.

The Business Management -Nonprofit Major closely parallels traditional business management programs, with exceptions in the areas of financial and organizational issues.

Graduates of the Business Management -Nonprofit Major may find jobs with nonprofit agencies specializing in the environment, health, child welfare, relief, the arts, and many other causes.

The number of people engaged in the nonprofit sector is significant. According to a report by the Congregational Research Service, charitable organizations are estimated to employ more than 7 percent of the U.S. workforce. The broader nonprofit workforce will employ 10 percent. The growth potential within the nonprofit sector is equally impressive. Perhaps more impressive is the numbers within Michigan, our primary recruiting area. While considered the epicenter of the economic recession, Michigan reports 10,000 new organizations from 1997 to 2009, a 25% increase since 1997. A recent article in the Grand Rapids Press states that one in every ten workers in the State of Michigan is employed in the nonprofit sector.

Looking closer within our constituent community, we find many of our mission's organizations operating as nonprofit entities. Jim Chamberlin, Student Director for the International Conference On Missions (ICOM), reports that a significant number of the convention exhibitors are nonprofit organizations. These include organizations such as International Disaster Emergency Service (IDES), Rapha House, Inner City Missions, and the many Bible colleges.

Interest in missions is up. According to Dr. Kendi Howells Douglas, the teaching and emphasis on the "Missional Church" over the last decade may well have much to do with the increasing number of our students interested in serving in mission related fields. This emphasis has produced an exciting number of students dedicating their lives to Kingdom work. Further, students seem more inclined to a broader view of Kingdom work - no longer contained by the walls of the church building.

Most importantly, the need for servant-leaders to lead these organizations is great. Servant-leaders who are educated in sound business practices are required to effectively execute the many important missions and ministries in the nonprofit sector. They must also be educated in the important function of funding their vision and sound resource management while holding to Kingdom principles well established through our Bible/Theology Major that accompanies a degree in Business Management - Nonprofit from Great Lakes Christian College. Effective stewardship necessitates effective preparation.

TESOL Minor

We are also pleased to announce the addition of a program for Teaching English to Speakers of Other Languages (TESOL). The TESOL minor and certification program will prepare our students to teach English as a second language in a variety of contexts and in association with a number of ministries including: inner-cities and refugees services, displaced people groups, exchange students and international campus ministries all over the United States, and allow for a student to enter into any number of countries that may be hard to serve in due to political/religious restrictions. Teaching English has been a gateway for mission work for many years and GLCC already has at least a dozen or more students serving in this capacity. It was a natural fit to allow students to gain this certification through GLCC instead of transferring to other institutions.





Om March 16 we're ROASTING Dr. Lloyd Knowles and you can get in on the fun too!

Send us a 30-60 second video of yourself joking at the jester's expense! As time allows, we will show the videos at the roast. Your video may be included on the Joking with the Jester DVD to be sold following the event

Joking with the Jester

— March 16, 2012

(all proceeds to fund the Knowles Learning Center). Upload your video on the Joking with the Jester page of our website.

No matter where you live you can still **join in on the fun live on Facebook and Twitter!** We will post photos of items up for auction on **Facebook**. Just comment under the photo with your bid and the highest bidder wins! But hurry, all auctions end by March 15. You can also join us on **Twitter @GLCCCrusaders** during the Roast at approximately 8:00 p.m. EDT on March 16 where we will tweet out some of the really good zingers and share your tweets live to all in attendance at the dinner. Tweet with the hashtag #RoastLloyd.

Buy the DVD. We will record the entire event and compile a DVD for sale after the event. Pre-orders can be made at the dinner or by contacting Karyn Harrison at kharrison@glcc.edu.

The alumni goal of \$200,000 over the next three years will go toward the

\$1.5 million Knowles Learning Center and the **naming of the remodeled GLCC Cafeteria**. Once the faculty offices are relocated to the new office building, the cafeteria will be expanded, remodeled, and named in honor of the alumni of GLCC. The name of the cafeteria will be revealed at the March 16 Joking with the Jester event. This is the kick off toward the alumni goal for the campaign. Follow the Roast on Twitter #RoastLloyd.

Any donor has the option to give a gift to the Expanding the Capacity for Learning campaign in honor of or in memory of someone. Alumni will want to consider giving a gift in honor of a professor, either from the past or present. These tributes will be displayed in the new faculty suite. All attributing gifts are also recognized annually in the KEY (see page 13). Please designate your gift accordingly.

Church Connect

March 24, 9:00 a.m.- 12:30 p.m.

We would like **every supporting church** to send representatives to connect with us and get a first hand update on the ministry of Great Lakes Christian College. We will provide key information that will help mission ministry teams and church leadership teams for 2012.

- **Tours of the campus (8:30 a.m.)**
- **Book giveaways**

RSVP by March 19 by scanning the QR code to the left or visiting www.2012churchconnect.eventbrite.com

If you need assistance please contact Karyn at 517-321-0242, ext. 224, or e-mail kharrison@glcc.edu.

Register here by scanning this QR code with your smartphone or other device.



ALUMNI NEWS

1970s

George Edward Geans (ThB 1970) went to be with our Lord and Savior Jesus Christ on July 17.

Art Grove (1974-1975), former Librarian from 1988-1999, completed his earthly journey and entered his eternal heavenly home on November 29.

Bud Corless (IPT 1976) and Ruthie are retired from full-time ministry and doing fill-in preaching in Cottonwood, Arizona.

1980s

Don A. Stowell (BRE 1981) and **Sharlene (Trabert, BRE 1992)** began their 13th year of ministry with the Lockland Christian Church in Cincinnati, Ohio. They are the parents of three grown daughters and have three beautiful grandchildren.



Michael Wetzel (BRE 1985) published *Shepherd's Purse - For the Forgotten Ones*, highlighting the plight of street children and orphans in Ukraine and Russia. It tells the story of the journey of how Shepherd's Purse began.

1990s

Darwin Frettenborough (APT 1997) was called home to be with our Lord and Savior on December 18.

Chris Monks (1999-2002) published *Every Film A Parable; Every Life A Story*. It's a memoir, in the form of short essays, about God using scenes from films and his own life experiences to mold his character today.

2000s

Melvin Balogh (BRE 2002) accepted the position of volleyball coach for Peru State College.

Barbie Fischer (2003-2007) is attending the Center for Justice and Peacebuilding at Eastern Mennonite University (VA) to earn her Master's in Conflict Transformation. Barbie is working on developing a restorative justice ministry, and is a Reentry Coach at Offender Aid and Restoration, working to aid incarcerated people on their transition back into society using restorative practices based in the teachings of scripture.

Jared Shouey (BS 2009) graduated Cum Laude from Thomas M. Cooley Law School with the degree of Juris Doctor.

Send alumni news to key@glcc.edu

Join us on www.facebook.com/GreatLakesChristianCollege
And on Twitter @GLCCCrusaders

FUTURE CRUSADERS



Walter (AA 2007) and **Jamie (Harden, BS 2008) Neuen-schwander** welcomed Adelaide Charis on May 17. She weighed 10 lbs. 5 oz. and was 21 inches long.



Tim (2000-2005) and **Pam (Wrisley, BS 2006) St. Louis** welcomed Lillienne Elaine on October 27. She joined big sister Bella and big brother David.

Bob Hargrave died November 25, 2011. He and his wife Mary Martha served the College between 1967 and 1982. Bob was loved and respected as the New Testament Studies professor. Many alumni will remember his Life of Christ class and the volumes of class notes that were taken. Bob was all about evangelism and preaching so he took the oversight of the Kerygma Club organized to train young men to preach. Bob loved to sing accompanied by Mary Martha. His ministry experience included serving in churches in Hutsonville, IL, Defiance, OH, Archbold, OH, Cape Coral, FL, DeWitt, MI, Chiefland and Crystal River, FL and then in Holiday, FL. We remember the Hargraves and the young lives they impacted for the cause of Christ.

"Since I teach in the Bible Department I feel I'm very fortunate to be able to share my knowledge of God's Word and my faith with young men and women who will go forth with the Word of life as God's messengers. If the Lord tarries we believe many great things will happen for years to come because of what is now being taught at Great Lakes." — Bob Hargrave, 1978



Dr. Jack Cottrell
Cincinnati Christian
University Professor,
Cincinnati, OH



Rubel Shelley
Rochester College
President,
Rochester Hills, MI



Larry Carter
Great Lakes Christian
College President
Lansing, Michigan



Scott Crary
His House Christian
Fellowship
Central Michigan University

**To GOD
be the Glory**
It's Not About Us...It's All About Him

Michigan Christian Convention
April 20-21, 2012

Great Lakes Christian College
Lansing, Michigan

MichiganChristianConvention.org

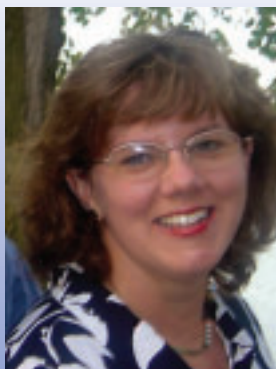
Youth Sessions

Great Lakes Christian College presents Women's Spring Celebration

Far Beyond All Knowledge



Ephesians 3:16-19



with

Mitzi Saltsman

Mitzi (VanHorn) Saltsman is a GLCC alumna who came to GLCC with an interest in missions. She graduated in 1979 and two weeks later married Scott Saltsman. They have served in several ministries and started a church

in Fremont, Indiana eight years ago. With four grown children, three of whom are GLCC alumni, Mitzi is now able to pursue her passion for public speaking.

"I love that Jesus taught with storytelling and I strive to do the same," says Mitzi. And she has plenty of stories to tell! Mitzi's life is filled with twists and turns and fascinating stories of God's grace and provision. "Following God's path is not always easy, but most certainly adventurous!" she says.

Mitzi's goal as a Christian woman is to be delightful to her God. Psalm 18:19 has been her stronghold: "He brought me out into a spacious place; He rescued me because He delighted in me." Since God has delighted in her, she strives to live each day being delightful to Him.

Friday, April 27, 2012

6:30 p.m. Food and Fellowship

8:00 p.m. Program

Tickets: \$12.00 before April 13

\$20.00 after April 13

Call (517) 321-0242 x214



The project this year, with a goal of \$12,000, will fund the decorating and furnishing of the common area located in the faculty office suite of the Knowles Learning Center. Come early to see our newest building! Guided tours from 4:30 p.m.- 6:00 p.m.

Music by Timeless

We will be led in an old fashioned hymn sing by Timeless. This all-alumni praise team includes: Julie (Hardy) Ball 85-87; Karyn (Hardy) Harrison, 84-89; Kim (Clouse) Branyan, and Amy (Fultz) Krause, 85-86.

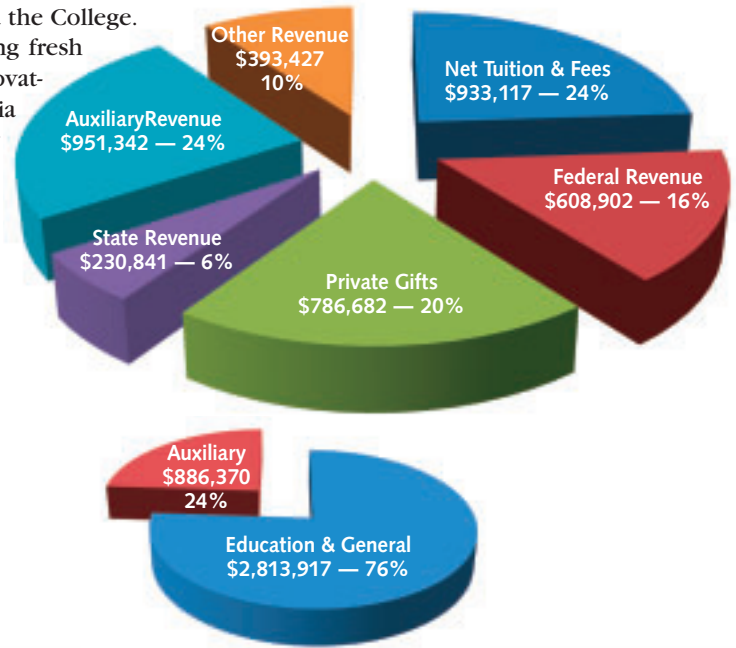
Campus Improvements

Great Lakes realized an increase in net assets of \$144,024 in Fiscal Year 2010 – 2011. Gains in investments and an improved economy greatly helped the College.

Improvements were made in the Administration Building including fresh paint through the hallways, new carpet in the Student Mall, and renovating the Main Lobby area. New ovens were purchased for the Cafeteria and grill and patio areas were constructed on the campus for our students. Additional security cameras were installed for the Men's Residence and Family Housing.



A very special thank you to the Bethel Church of Christ in Bethel, Ohio for providing the manual labor for many of these projects!



Revenues

Net Tuition & Fees	\$933,117
Federal Revenue	\$608,902
Private Gifts	\$786,682
State Revenue	\$230,841
Auxiliary Revenue	\$951,342
Other Revenue	\$393,427
TOTAL	\$3,904,311

Expenses

Education & General	\$2,813,917
Auxiliary	\$886,370
TOTAL	\$3,760,287

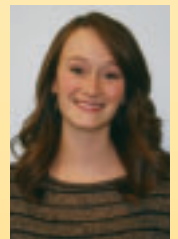
New Faculty and Staff



We are pleased to report the addition of Ryan Lambright to our Admissions Department. Ryan is a 2011 graduate of GLCC with a major in Interpersonal and Organizational Communications. Ryan brings many positives to our Department including strong ties to our local homeschool community and experience with CIY in organizing their MOVE summer events.



We welcomed Ryan Bushnell as our new Director of Student Life in January. Ryan comes with both experience and passion for campus ministry. He is off to a great start in establishing relationships with students. We have also welcomed Kayla (Ruff, BS 2011) Zittel as our Women's Resident Supervisor. We look forward to building on the past efforts of Kris and Emily Bargaen. We certainly wish Kris and Emily all God's best in their new adventure!





Once upon a time...there was an "off season" in the Admissions Department. No so anymore! We have seen our schedule fill up year round with many great opportunities to interact with perspective students. Here are some recent and future notables.

In November we host our biggest on-campus event - Fusion. This last year's event (Nov. 11-13) was another very successful event. Scott Monett, GLCC Alum and Youth Minister at Northwest Christian Church in Decatur, IL, as our speaker and The Jordan Howerton Band led worship. We had over 400 high school students and sponsors in attendance.

In January we began another semester. It is a busy time for us as we work to get applications processed, files completed, and students registered. This spring semester we set a record for new students! Along

In January we began another semester. It is a busy time for us as we work to get applications processed, files completed, and students registered. This spring semester we set a record for new students!

with all this we begin the selection process for our Summer Outreach Teams. If you are a dean for a week of camp or another activity that would need one of our teams, be sure to let us know very soon as the schedule fills up very quickly. There is a form you can fill out on our website under the Admissions tab.

We host our annual Java Jam on February 28. This is a great time for perspective students to come to campus and hang out with our students. We open up our "coffee house" and let the students entertain. We especially encourage our students to invite siblings and friends interested in GLCC. Many stay overnight and attend classes the next day.

March and April bring the Spring College Fairs, the Michigan Statewide Youth Convention (March 9-11), Ohio Teens for Christ, and several other events and activities. On the road again!

We are also very excited about the recent additions to our Admissions and Student Services Departments! Please look for those stories elsewhere in this KEY.

In closing, I would like to simply express how exciting it is to see and hear of all the positive activity happening in and around GLCC these days! We have so much to be excited about and thankful for! One such activity is the progress on the building. How fun it is to see it coming to realization! Come by and see it for yourself and I think you will agree with me - it looks great!

*Lloyd Scharer
Vice President of
Enrollment Management*



Great Lakes Christian College

Open House

April 17, 2012
6:00-8:00 p.m.
6211 W. Willow Hwy.
Lansing, MI 48917
Doty Center

Come visit our campus, speak with professors, meet with financial aid officers and learn more about the degrees offered at GLCC. Campus life, sports and outreach representatives will also be available.

Intellectual, Spiritual & Personal Growth











In Memory of:

Thelma Ammerman – by Mr. and Mrs. Ronald W. Fisher
 Mary Benedict – by Algonac Church of Christ
 Linus Bond – by Owosso Church of Christ
 Janice Burdick – by Mr. and Mrs. Gene Beavers, Bruce Burdick
 Elton and Edna Carlson – by Mr. and Mrs. Dewey Nash
 Ruth Carpenter – by Kristin Brooks, Mr. and Mrs. Kenneth Patterson, Mr. and Mrs. Roger Kelley, Kathleen Copeyon, Mr. and Mrs. Charles M. Baker, Elaine Swanson, Mr. and Mrs. Terry Lewis, Mr. and Mrs. Larry Wagner, Mr. and Mrs. David S. Harding
 John M. Carter – by Mrs. Margaret Oplinger
 Fred and Prudence Chase – by Mr. and Mrs. Robert D. Warren
 Shirley E. Congdon – by Ralph Congdon
 Lucille Cotter – by Mr. and Mrs. Charles E. Fox
 Arthur Cross – by Grand Rapids Christian Church
 Emily Curie – by Harold Curie
 Louis Detro – by Mr. and Mrs. Fred Garvin, Mr. and Mrs. John D. Green
 Joan V. Dickinson – by Ms. Gay Lynne Liebertz
 Brant Lee Doty – by Mr. and Mrs. Brant L. Doty, Thomas G. Garman, Dr. Henry E. Webb, Ruth Doty
 Violet J. Downing – by Paul Perry, Verena A. Ireland and Craig, Cathy, and Suzanne
 Peter J. Ebert – by Mrs. Hazel Ebert
 Virgil and Margorie Felton – by Mr. and Mrs. Bernard C. Green
 Esther L. Fox – by Ruth Doty
 Florence Franklin – by Mrs. Clara S. Murphy
 Della Mae Frazier – by Willard Frazier
 Clint and Alice Freimund – by Mr. and Mrs. David S. Harding, Marjorie Harding,
 George E. Geans – by Sally J. Garman
 Dr. and Mrs. Lawrence Ginther – by Nancy Ginther
 Marjorie Girdwood – by Mr. and Mrs. Terry Horton
 Benjamin Graham – by Mr. and Mrs. Frank Graham
 Dean Graham – by Mr. and Mrs. Charles E. Fox

William and Lola Graham – by Mr. and Mrs. Charles E. Fox
 James W. Greenwood – by Mr. and Mrs. Maurice L. Dawson
 Arthur L. Grove – by Nancy Ginther
 Harry Harden – by Mr. and Mrs. Charles M. Emmert
 David S. Harding – by Neal R. Torrey and family, Kathleen Copeyon, Nancy L. Poorman, Mr. and Mrs. Blaine C. Barnard, Mr. and Mrs. Gordon L. Squires, Mr. and Mrs. Larry Settle
 Mary Martha Hargrave – by Mr. and Mrs. Thomas L. Bender
 Robert J. Hargrave – by Mr. and Mrs. Fred Worthington, Mr. and Mrs. Lloyd E. Mann, Adolene Eddington, Mr. and Mrs. Thomas L. Bender, Mr. and Mrs. Mike Hargrave, Mr. and Mrs. Brian Maxey, Mr. and Mrs. Robert G. Hays
 Max Haven – by West Side Church of Christ
 Don Helton – by Mr. and Mrs. Robert Palmer
 Donald Hertsel – by Edith M. Hertsel
 Dexter Hughson – by Mr. and Mrs. Charles M. Emmert
 Irene James – by Ruth Doty
 Jeremy Johnson – by Larry H. Johnson
 Marion Kopy – by Stuart Hutchings, Tina Popa, Rochelle Orleans, Mr. and Mrs. Charles Ponagai, Partick Beckley, Sharon Cline, Paul Starck, Jeanne M. Strickland
 Roger Kronk – by Mr. and Mrs. George L. Merrill
 Eva Lanham – by Mr. and Mrs. James M. Hutchinson
 V. Anthony "Tony" Lareau – by Mr. and Mrs. Verlin Lareau
 Bruce Letwin – by Mr. and Mrs. Gordon Ford, Deborah A. Griffin, Randy Meulman, Mr. and Mrs. Harry J. Widman
 Faye L. Leuthold – by Mr. and Mrs. Jeff Harper
 Wanetta Little – by Mr. and Mrs. William J. Claerhout, Mr. and Mrs. Dean H. Little
 Christina Lower – by Mr. and Mrs. William Lower
 Henry and Imogene McAdams – by Mr. and Mrs. Elton Moyes
 Cleo Miller – by Mr. and Mrs. William Wakefield
 George Moon – by Mr. and Mrs. Elton Moyes

Gwen Moyes – by Mr. and Mrs. Elton Moyes
 Donald J. Narragon – by Ruth Kegerreis
 Robert P. Olson – by Marcia Archambault
 Sam Platner – by Thelma Platner
 Robert Price – by Mr. and Mrs. Dennis Price
 Fred Reinhardt – by Mr. and Mrs. Fred Reinhardt
 Carol Ridenour – by Leon Ridenour
 Jeanette Shea – by Mr. and Mrs. Charles M. Emmert
 F. Noreen Smith - Mr. and Mrs. Elton Moyes
 Betty Stacy – by Mrs. Kim A. Hannebohn, Mr. and Mrs. H. Neil Haney, Mr. and Mrs. Gerald A. Johnson, Mr. and Mrs. Nathan Sackett
 Patti Sutter Brown – by Mrs. Ellen Bates
 Norbert Travis – by Mrs. Louise Travis
 Sharon Umbanhowar – by Wendy L. Acre, Mr. and Mrs. Lauren A. Winsor, Mr. and Mrs. Gene Beavers, Jon Elliott, Carolyn Settle, Mr. and Mrs. Roger Keller, Mr. and Mrs. Jerry Sheets, Mr. and Mrs. Rick Smith, Mr. and Mrs. Ron Payne
 Ralph Woodard – by Mr. and Mrs. William Lower
 Pam Woodworth – by Phyllis Forsythe
 Fred Zimmerman – by Mr. and Mrs. Timothy J. Bruce, Mr. and Mrs. Bruce Rollston, Kathie Gniewek, Mr. and Mrs. Mark McGilvrey, Dr. David Monroe, Christview Christian Church

In Honor of:

Ruth Doty – by June P. Hunter, Mr. and Mrs. Robert L. Broene
 Mr. and Mrs. Fred Garvin – by Mr. and Mrs. John D. Green
 Mr. and Mrs. George Getchel – by Mr. and Mrs. Charles E. Fox
 Bernard C. Green – by Mr. and Mrs. John D. Green
 Mr. and Mrs. E. Dan Johnson – by David M. Johnson, Jeremiah J. Johnson, Mr. and Mrs. Scott M. Monette
 Lloyd A. Knowles – by Mr. and Mrs. Robert Palmer, Ruth Doty, Mr. and Mrs. Adam R. DeWitt
 Harry A. Richards – by Mr. and Mrs. Elton Moyes
 Bernard Swarthout – by Mr. and Mrs. Andrew J. Hansen, Mr. and Mrs. Gerald A. Johnston

Matching Gifts

Donations listed are from January 1, 2011-December 31, 2011

Make your gift go even further! Many companies participate in gift patching programs. Some companies will even match gifts made by retirees. To find out if your company has a matching gift policy please contact GLCC. If your company is eligible, request a matching gift form from your employer, and send it signed and completed with your gift to GLCC. We will do the rest. The impact of your gift may be doubled or possibly tripled!

Auto-Owners Insurance Co.	2000
Coca-Cola Company.	2000
Consumers Energy	500
Dana Corporation Foundation	1000
Dow Chemical Company Foundation	850
Kellogg's Corporate Citizenship Fund	1000
Nationwide Foundation	50
Pfizer Inc.	350
Scripps Howard Foundation	100
Total	7850

Beyond the Classroom

Ron Peters (BRE 1999), Associate Professor of New Testament, attended the national Evangelical Theological Society (ETS) and Society of Biblical Literature (SBL) meetings in November.

Dr. Esther Hetrick, Professor of Music, attended the Association of Christian College Music Educators Conference in September. She also led the worship and taught interactive worship sessions for *Northwomen*.

Judy Beavers (BRE 1978), Instructor of Music, attended the Association of Christian College Music Educators Conference in September. She is also on the planning team for *Northwomen* — a womens retreat held in Kalkaska Michigan each August. Last year she also led a workshop for *Northwomen*.

Dr. John Nugent (BRE 1995), Professor of Old Testament, presented two papers at the Christian Scholars Conference in Malibu, California in June, led a church mission trip to Catskill Christian Assembly in upstate New York in July, taught at a men's retreat in October, and attended the SBL/AAR conference in San Francisco, California in November. He also edited the book *The End of Sacrifice: The Capital Punishment Writings of John Howard Yoder* (Herald Press, 2011), published the book *The Politics of Yahweh: John Howard Yoder, the Old Testament, and the People of God* (Cascade Books, 2011), published "A Yoderian Rejoinder to Leithart's *Defending Constantine*" in *Mennonite Quarterly Review* (Oct 2011), and published lesson commentaries on Genesis for Standard Publishing's Adult Curriculum.

Dr. Kendi Howells Douglas, Professor of Cross-Cultural Ministry, attended the International Conference on Missions in November in Atlanta, Georgia and The International Society of Urban Missiologists in Bangkok, Thailand in January. She also became Assistant Research Editor for *New Urban World Journal*.

Dr. Lloyd Knowles, Professor of History, started an interim ministry with the West Kalamazoo Christian Church.

Dr. Alvin Kuest, Professor of Christian Education, preached four Sundays for West Kalamazoo Christian Church. He was also the Advisor for the Philippine Mission team that went to the Philippines February.

James Orme, Director of Library Services, ran in the Chicago Marathon on October 9.

Books in Print

The following titles from our professors are available in the GLCC bookstore:

C.E.: The Heritage of Christian Education, ed. by James Estep with contributions from Alvin Kuest (College Press, 2003).

Foundations of Christian Education, ed. by Eleanor Ann Daniel and John William Wade with contributions from Alvin Kuest (College Press, 1999).

Radical Ecumenicity: Pursuing Unity and Continuity after John Howard Yoder, ed. by John C. Nugent (Abilene Christian University Press, 2010).

The End of Sacrifice: The Capital Punishment Writings of John Howard Yoder, ed. by John C. Nugent (Herald Press, 2011).



The Politics of Yahweh: John Howard Yoder, the Old Testament, and the People of God, by John C. Nugent (Cascade Books/Wipf & Stock, 2011).

In Pursuit of the True Church, by Dr. Lloyd Knowles (Linus Publishing, 2007).

You Vote in Your Own Election, by Ronald W. Fisher (2nd ed. Great Lakes Christian College, 2011).



2011 National Preaching Summit

What do you get when you put 15 preachers and students on a bus for a road trip to Joplin, Missouri? Well, in this case...a life-changing experience. The 10-hour trip gave the guys plenty of time to share stories, encourage, and connect with one another. GLCC was happy to be able to organize transportation on our bus for these men to participate in this year's National Preaching Summit. Here's what a few of the men had to say:

"I had never been to the Preaching Summit before, going there for the first time was such an eye and mind opening experience. I had a really good time being on the bus with my fellow students and other preachers. [They] kept me laughing all the way from the school to the Summit, which really made the trip more exciting. We had some good theological discussions also shared a lot of jokes! The bus ride was great and I would definitely consider going again to the National Preaching Summit. Thank you."
-Hemann Finch, GLCC student

"Traveling to the National Preaching Summit with other preachers was a great time! I was able to reconnect with long-

time friends and make new friendships with others during our road trip. The GLCC bus is very comfortable and I appreciate the college sponsoring this trip. I will look forward to reconnecting with the preachers next year to do the same thing!" -Mike Harrison (BRE 1989), GLCC professor

"Watching aspiring preachers interact with men who stand in the pulpit week in and week out was my highlight of the National Preaching Summit. Our young preachers saw that seasoned veterans are still learning, still growing, still studying their craft. My hope is that these students will dedicate themselves to a lifetime of preaching, and also becoming lifetime students of preaching."
-Frank Weller (BRE 1989), Sr. Minister, South Lansing Christian Church

This year's National Preaching Summit will be held March 12-13, 2012. The Summit will focus on equipping the men to preach from the Old Testament. Again, GLCC is looking forward to providing transportation for the men on the GLCC bus. After all, getting there is half the fun!

Success!



Our Crusaders made it to the second round of the regionals! They were also ranked tenth in the nation and had 7 players in the top 25 nationwide in the NCCAA! Congratulations to Coach Justin and his players!



Standing: Head Coach Justin Braman, Spencer Husch, Hermann Finch, Jimmie Harvey, Joey Hehrer, Doug Haggadone, Adam Burton, Andrew Papp, Phil Stefanelli. Kneeling: Joey Whittake, Aaron Woods, Takawira Sithole, Brad Bisdorf, Josiah LaBlanc. Sitting: Brandon Gregory, Eric French, Anthony Rae, Danny Holland

New Volleyball Coach

Mary Smith

Mary Smith started playing volleyball when she was in high school. By her third year she was first string setter and captain of the team. In her senior year she was selected to the all conference winning team.

Mary started coaching volleyball over 20 years ago when her oldest daughter was attended a small Christian school that needed a coach. After several years she moved to coaching the Lansing Area Homeschool Athletic varsity team. She then helped form and coach the Eaton County Homeschool Organization (E.C.H.O.) which is only volleyball. She keeps her skills sharp by attending the USA volleyball coaches clinics offered by Lansing Community College.

She loves teaching and seeing players realize their own strengths and weaknesses. Mary believes her players can learn what is important in life, by learning on the court what they can do with God guiding them in their daily walk.



19th Annual
Golf Benefit
 Centennial Acres Golf Course
August 11, 2012
www.glcc.edu

Great Lakes Christian College, an institution of higher education affiliated with Christian Churches/Churches of Christ, seeks to glorify God by preparing students to be servant-leaders in the church and world.

The KEY is published by Great Lakes Christian College, located at the corner of N. Creyts Road and Willow Highway. Our Mailing address is Great Lakes Bible College AKA Great Lakes Christian College 6211 West Willow Highway Lansing, MI 48917 Phone 517.321.0242 Fax 517.321.5902 e-mail key@glcc.edu www.glcc.edu

Administration:

Larry Carter, President
Phil Beavers, Vice President
of Institutional Advancement
Bill Brossman, Vice President of Finance
and Operations
Lloyd Scharer, Vice President
of Enrollment Management
David Richards, Vice President
of Academic Affairs

KEY Staff:

Robyn Orme, Editor
Karyn Harrison, Staff writer
Natasha Smith, Photographer

Great Lakes Christian College is accredited by:

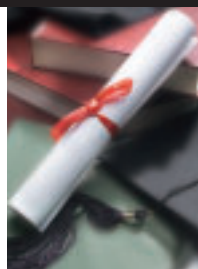
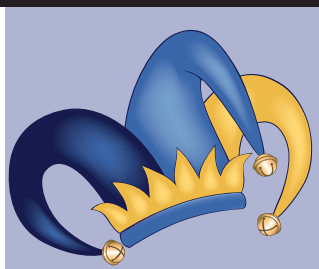
The Higher Learning Commission and a member
of the North Central Association
www.ncahigherlearningcommission.org

and the

The Association for Biblical Higher Education
(formerly the Accrediting Association of Bible Colleges)
5850 T.G. Lee Blvd, Suite 130
Orlando, FL 32822
407.207.0808, www.abhe.org

On the Cover: Caroline Allison, daughter of Matt and Jessie Allison, at the ground breaking ceremony for the Knowles Learning Center Phase One.

Upcoming Events



MARCH

- 16 Joking with the Jester
- 24 Church Connect
- 26-30 Week of Outreach 2

APRIL

- 13-14 Human Trafficking Conference
- 20-21 Michigan Christian Convention
- 17 Admissions Open House
- 27 Women's Spring Celebration
- 27 Board of Trustees Meeting
- 27 Senior Showcase

MAY

- 1 Honors Chapel
- 7-10 Final Exams
- 11 Graduate Banquet
- 12 Commencement

JUNE

- 17-29 Promise Music Camp
- 29 Promise Home Concert

AUGUST

- 11 Golf Benefit
- 20 New Student Registration
- 21-24 Orientation
- 27 Classes begin
- 28 Convocation

SEPTEMBER

- 3 Labor Day No Classes
- 18-20 Missions Emphasis Week
- 28 Board of Trustees Meeting

FOR INFORMATION ON CURRENT GLCC EVENTS AND ANNOUNCEMENTS,
BE SURE TO VISIT, WWW.GLCC.EDU, LIKE US ON FACEBOOK,
OR FOLLOW US ON TWITTER @GLCCCRUSADERS.